



Anthology of Persian Poetry (Safina)

Calligrapher 'Abd al-'Azim al-Yahya

1092 and 1096 AH/1681 and 1685 CE

Long, narrow books bound on the short edge are known as 'safina', a word meaning 'boat'. They were a popular form for collections of works by different poets. This 'safina', dated

1681 and 1685, contains poems by several Safavid poets, including 'Urfi, Tahir, and Kalim, written on extremely thin, gold-sprinkled paper and three tinted drawings in a late 16th-century style. Here a falconer is seated in a flowering tree while a mythical bird, the simurgh swoops overhead. The image serves as an analogue to the poetry, which is mostly of a mystical nature, rather than an illustration of a narrative.

Artwork Details

Overview

Signatures, Inscriptions, and Markings

Provenance

Exhibition History

Title: Anthology of Persian Poetry (Safina)

Calligrapher: 'Abd al-'Azim al-Yahya

Date: 1092 and 1096 AH/1681 and 1685 CE

Geography: Attributed to Iran

Medium: Main support: Ink and watercolor on paper. Binding: Leather

Dimensions: H. 7 1/2 in. (19.1 cm)

W. 3 1/8 in. (7.9 cm)

Classification: Codices

Credit Line: Purchase, Elizabeth S. Ettinghausen Gift, in memory of Richard Ettinghausen, 2003

Accession Number: 2003.121

Learn more about this artwork



Islamic Art at The Met

The Met's collection of Islamic art is one of the most comprehensive in the world and ranges in date from the seventh to the twenty-first century. Its more than 15,000 objects reflect the great diversity and range of the cultural traditions from Spain to...

Timeline of Art History



CHRONOLOGY

Iran, 1600-1800 A.D.

Related Artworks

All Related Artworks

By 'Abd al-'Azim al-Yahya

Islamic Art

Binding

Codices

Illuminated manuscripts

Ink

Leather

Manuscripts

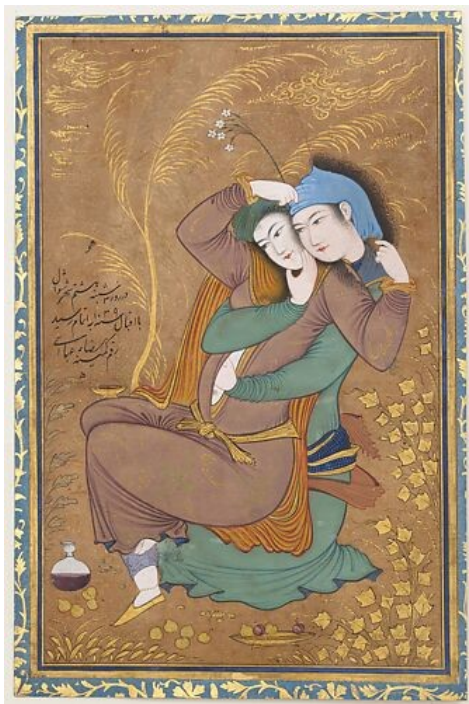
Paper

Watercolors

From Asia

From Iran

From A.D. 1600-1800



The Lovers

Painting by Riza-yi 'Abbasi
(Iranian, ca. 1565–d. 1635)

dated 1039 AH/1630 CE



Portable Qur'an Manuscript

17th century

Resources for Research

The [Met's Libraries and Research Centers](#) provide unparalleled resources for research and welcome an international community of students and scholars.

The [Met Collection API](#) is where all makers, creators, researchers, and dreamers can connect to the most up-to-date data and public domain images for The Met collection.

[Open Access](#) data and public domain images are available for unrestricted commercial and noncommercial use without permission or fee.

Feedback

We continue to research and examine historical and cultural context for objects in The Met collection. If you have comments or questions about this object record, please [complete](#)

and submit this form. The Museum looks forward to receiving your comments.

© 2000–2024 The Metropolitan Museum of Art. All rights reserved.